

## Reduction of Side Effects by Segmented Electrodes in Case of Subthalamic Nucleus Deep Brain Stimulation in Parkinson Disease: A Case Report.

Frank P. Schwarm<sup>1,\*</sup>, Iris Reuter<sup>2</sup>, Maximilian Swoboda<sup>3</sup>, Eberhard Uhl<sup>1</sup>, Malgorzata A. Kolodziej<sup>1</sup>

<sup>1</sup>Department of Neurosurgery, Justus-Liebig University Giessen, Giessen, Germany

<sup>2</sup>Department of Neurology, Justus-Liebig University Giessen, Giessen, Germany

<sup>3</sup>Department of Anesthesiology, Intensive Care and Pain Therapy, Justus-Liebig University Giessen, Giessen, Germany

### Abstract

Patients suffering treatment resistant Parkinson's disease (PD) are potential candidates for deep brain stimulation (DBS). Commonly most implanted electrodes have a cylindrical shape with quadripolar electrode contacts and generate a symmetrical stimulation field around the lead. To reduce side effects through activation of neighboring fibers a new electrode design with segmented contacts was developed and enables a better adaption of the field of stimulation as well as a multi-target stimulation to improve therapeutic benefits.

We report about a 51-year-old male patient with a 15-year history of treatment-refractory PD, who was implanted with bilateral segmented electrodes in the subthalamic nucleus (STN) with St. Jude Medical Infinity™ DBS System (Abbott/St. Jude Medical, Saint Paul, Minnesota, USA). Despite a clear mood-enhancing effect, stimulation with ring electrodes caused motor side effects including rigor and speech disorder. With segmented electrodes an effective and gentle stimulation was achieved. The stimulation of the anterior segments in the central position of the electrode in the STN showed no side-effects and allowed a reduction of initial symptoms in an low stimulation amplitude.

Despite precise preoperatively planning and intraoperative trial stimulation, side effects of STN stimulation are very common. The application of segmented electrodes permits more options to reduce side effects rather than using ring electrodes. Studies with larger sample sizes are needed to establish the optional DBS electrode.

**Corresponding author:** Frank Patrick Schwarm, Department of Neurosurgery, Justus-Liebig University Giessen, Klinikstraße 33, 35392 Giessen, Germany, Phone: +49-641-985-52900, Fax: +49-641-985-57169, Email: [fp.schwarm@gmail.com](mailto:fp.schwarm@gmail.com)

**Keywords:** Deep brain stimulation, Parkinson disease, segmented electrodes

**Received:** Jan 30, 2019

**Accepted:** Feb 27, 2019

**Published:** Mar 01, 2019

**Editor:** Esra Dogru Huzmeli, Mustafa Kemal University School Of Physical Therapy And Rehabilitation, Turkey.

## Introduction

Deep brain stimulation (DBS) is a reversible neuromodulative “last-resort option” for medically refractory Parkinson’s disease (PD) in order to control movement problems and essential tremor<sup>1,2,3</sup>. The subthalamic nucleus (STN) and globus pallidus pars interna (GPi) are well accepted targets in the therapy of PD. STN stimulation is seen superior to GPi for medication reduction<sup>4</sup>. DBS permits focal adjustment of the STN, which resulted only in 41% reduction of initial symptoms in all patients and caused more side effects<sup>5</sup>. The percentage of responders with long-term reduction of their symptoms varies from 10-61.5%<sup>6,7</sup>.

The discrepancy in the results may be at least partially related to the differences in anatomical targeting, the stimulation protocol, and electrode design<sup>8</sup>.

Most implanted electrodes have a cylindrical shape with quadripolar electrode contacts and generate a symmetrical stimulation field<sup>9</sup>. To reduce side effects through activation of neighboring fibers, a new electrode design with segmented contacts was developed which enables a better adaption of the field of stimulation as well as multi-target stimulation<sup>10-12</sup>. Promising stimulation effects, a reduction of side effects, an improvement of the postoperative management, and the possibility to widen the therapeutic window were shown in the last few years<sup>13-17</sup>.

Here, we report our first clinical experience of directional DBS with the fully implantable segmented DBS system (Abbott/St. Jude Medical, Saint Paul, Minnesota, USA) for STN stimulation in PD.

### *Clinical Presentation*

### *History and Examination*

A 51-year-old male presented with a 15-year history of medication-refractory, tremor predominant PD and an impulse control disorders (ICD) under dopamine agonist therapy.

Initial diagnosis was made in 2011 clinically and with DaTSCAN. Initial clinical symptoms occurred in 2002 showing lower extremity rigor. Daily activities and work as a heart surgeon had not been severely affected at this time. In 2013 the patient developed an ICD with pathological gambling and compulsive shopping under dopamin agonist therapy. An optimization of the medical

therapy was conducted. Because of motor fluctuations under L-dopa therapy, an apomorphin therapy was started. In 2015 an acute deterioration was seen with worsening of rigor and tremor. Further the patient developed a difficulty in speaking. There was distinct rigidity, bradykinesia, and akinesia. After discussing treatment options, interdisciplinary decision was made to perform STN DBS. Patient’s informed consent was obtained.

### *Surgery*

MRI sequences with T1- and T2-FLAIR-weighted scans as well as a CT navigation scan were performed. BrainLab’s iPlan Stereotaxy 3.0 software (BrainLAB Inc., Feldkirchen, Germany) was used to target STN bilaterally. Prior the CT-investigation, the stereotactic head ring was applied. After acquisition and fusion of MRI and CT scans STN was measured in relation to the anterior commissure/ posterior commissure (AC-PC) line. Final coordinates in X-, Y-, Z-directions were calculated. The prior calculated coordinates of the electrode were applied to the stereotactic ZD frame (Inomed, Emmendingen, Germany). After applying the coordinates to the stereotactic verification phantom, accurate needle positioning was ensured. The stereotactic frame was applied to the patient. Burr hole craniotomy was done under local anesthesia and sedation with dexmedetomidine (Dexdor®, Orion Corporation, Espoo, Finland).

Microelectrode mapping was done with three electrodes. Test stimulation was performed to verify correct placement and define the therapeutic window (TW). Once desired position depth was reached at the central part of the STN, the stylets were replaced with segmented DBS electrodes. The right STN stimulation was started at -5mm from the target point. At -4mm anterior and central a sufficient stimulation effect was seen. Sufficient stimulation could be continued till +1.5mm. At the target point sufficient stimulation was seen in all three microelectrodes. A sufficient reduction of rigor and tremor in the neurological examination was seen with 2mA. The segmented electrode tip (2 and 3, Figure 1) was positioned at +1.5mm over the target point.

Microelectrode mapping at the left STN was performed in the exact same manner. The segmented electrode tip was positioned at +1 mm over the target point. The anterior electrode showed the best effect with

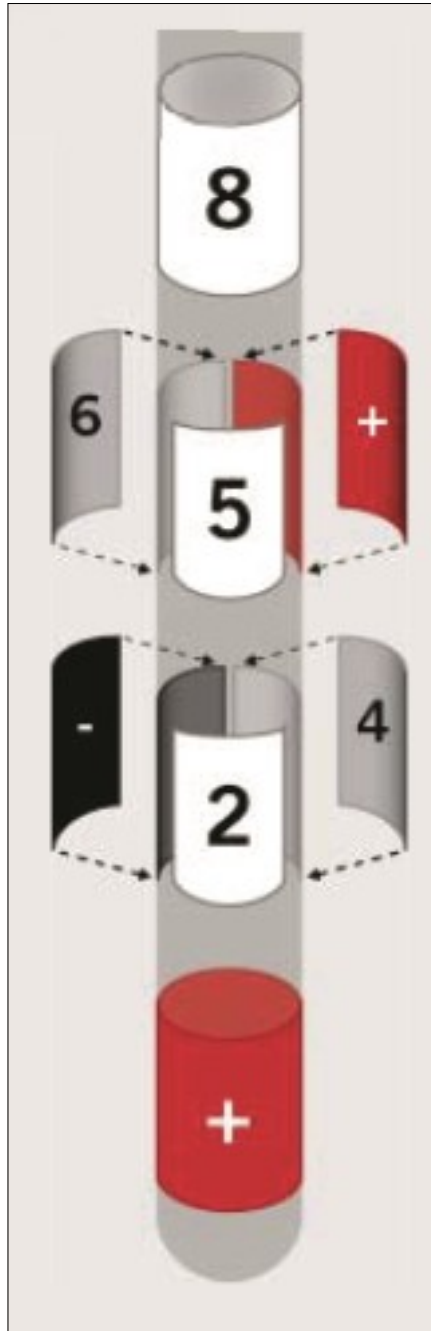


Figure 1. This model shows the segmented electrode with its segmented middle segments and multiple, activatable contact panels for adjusted stimulation.

an immediate improvement of tremor and dysdiadochokinesia at both sides. Once all segments around the circumference of the lead were simultaneously activated, stimulation was less effective. For intraoperative imaging, fluoroscopy was used. After bilateral implantation, connection to a subclavicular 2-channel pulse generator was done.

*Postoperative Course*

The procedure was performed without any complications. Postoperative cranial CT imaging revealed proper placement of both electrodes in the central part of STN (Figure 2). After fusion with the preoperative stereotactic plan, both electrodes were seen in the correct position of the STN (Figure 2). Electrodes were postoperatively activated bilaterally for continuous stimulation with the wireless iOS mobile programming platform (Table 1). The patient experienced strong improvement of bradykinesia and rigidity under stimulation of the anterior segmented electrode (130Hz, 0.5mA). He was able to speak and walk without any problems. The apomorphin medication was stopped. L-dopa medication was reduced. Simultaneous activation of all segments around the circumference of the electrode caused the patient to

suffer dysarthria and motor symptoms.

**Discussion**

Deep brain stimulation is an effective and reversible form of PD treatment<sup>1-3</sup>. This case illustrates that segmented electrodes can reduce most side effects because of individual circumferential stimulation of middle segments. This innovative and effective form of DBS allows optimization of the stimulation even though the electrode is optimal localized

Our first experience with segmented electrodes for DBS showed postoperatively a nearly complete regression of the motor symptoms without any side-effects.

Due to multiple, activatable contact panels of the segmented electrode it is possible to create a volume of tissue activated in different direction and expansion. Side effects thus could be reduced especially if the electrode is not optimally positioned or the patient developed side effects after stimulation<sup>18</sup>. Due to sufficient reduction of rigor and tremor in the reported case with low amplitude also power consumption is reduced<sup>12,19,20,16,21</sup>. *Zhang et al.* described enormous patient expectations and individual differences as the

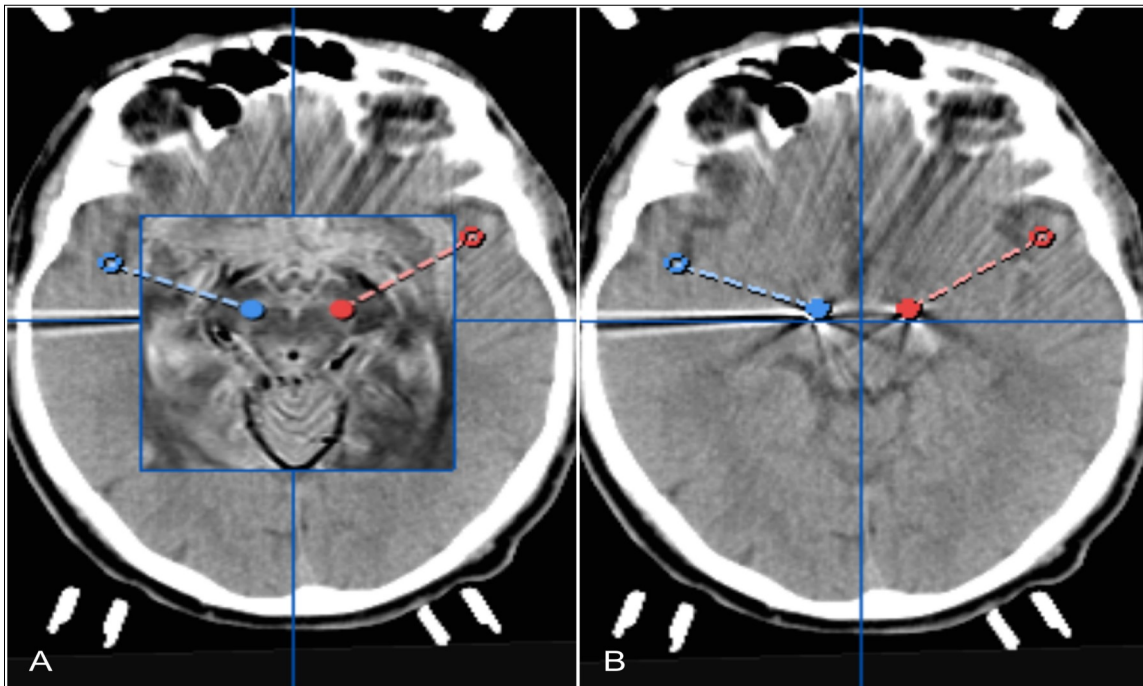


Figure 2. Pre- and postoperative computertomography merge showing tips of electrodes fused to bilateral trajectories of planned STN DBS

Table 1. Baseline data of the implanted electrodes and stimulation patterns for subthalamic nucleus (STN) deep brain stimulation (DBS).

	left STN	right STN
electrode type	Infinity 1-3-3-1 (1.27 x 0.5 mm)	Infinity 1-3-3-1 (1.27 x 0.5 mm)
amplitude	1.0 mA	0.9 mA
pulse width	60 $\mu$ s	60 $\mu$ s
frequency	110 Hz	130 Hz

most important reasons for stimulation malfunction and a not satisfactory conventional stimulation in PD patients. DBS can not alleviate all of PD symptoms, only the apparent symptoms are treated and with the conventional stimulation good covered<sup>18</sup>. Further the size and anatomical position of STN and maybe unsatisfactory electrode position could play an important role for insufficient stimulation<sup>18</sup>. The circular contact of the electrode could also affect other nearby structures during circular stimulation<sup>18</sup>.

Dysarthria as a DBS side effect, which is caused due to STN stimulation on the left side and could be reduced using bipolar stimulation with interleaving and low frequency stimulation<sup>18,22</sup>. As our case demonstrated, segmented electrodes could lead to a reduction of dysarthria as well.

To reduce the side effects with conventional electrodes Ramirez-Zamora *et al.* used to alleviate stimulation of STN, which induced choreoathetoid dyskinesia and incomplete Parkinson disease control<sup>22</sup>. This finding reasons the use of segmented electrodes in the case of our patient.

Further the wireless iOS mobile programming platform enables an easy and non-invasive therapy optimization. An improvement of the quality of life could be achieved.

Limitations of our case report are the lack of long-term clinical follow-up data, and the early postoperative time period.

### Conclusions

We showed advantages and feasibility of using a fully implantable neurostimulation device with segmented electrodes. Despite precise preoperative

planning and intraoperative trial stimulation, side effects of STN stimulation are common and may be reduced by segmented stimulation. Well-controlled studies with larger sample sizes are needed to establish this optional DBS electrode.

### References

1. Benabid AL, Chabardes S, Mitrofanis J, Pollak P. Deep brain stimulation of the subthalamic nucleus for the treatment of Parkinson's disease. *Lancet Neurol.* 2009;8(1):67-81.
2. Lyons KE, Pahwa R. Deep brain stimulation and essential tremor. *J Clin Neurophysiol Off Publ Am Electroencephalogr Soc.* 2004;21(1):2-5.
3. Mansouri A, Taslimi S, Badhiwala JH, et al. Deep brain stimulation for Parkinson's disease: meta-analysis of results of randomized trials at varying lengths of follow-up. *J Neurosurg.* June 2017:1-15.
4. Weaver FM, Follett K, Stern M, et al. Bilateral Deep Brain Stimulation vs Best Medical Therapy for Patients With Advanced Parkinson Disease. *JAMA J Am Med Assoc.* 2009;301(1):63.
5. Tsai H-C, Chang C-H, Pan J-I, et al. Pilot study of deep brain stimulation in refractory obsessive-compulsive disorder ethnic Chinese patients. *Psychiatry Clin Neurosci.* 2012;66(4): 303-312.
6. Huff W, Lenartz D, Schormann M, et al. Unilateral deep brain stimulation of the nucleus accumbens in patients with treatment-resistant obsessive-compulsive disorder: Outcomes after one year. *Clin Neurol Neurosurg.* 2010;112(2):137-143.

7. Greenberg BD, Gabriels LA, Malone DA, et al. Deep brain stimulation of the ventral internal capsule/ventral striatum for obsessive-compulsive disorder: worldwide experience. *Mol Psychiatry*. 2010;15(1):64-79.
8. Denys D, Mantione M, Figee M, et al. Deep Brain Stimulation of the Nucleus Accumbens for Treatment-Refractory Obsessive-Compulsive Disorder. *Arch Gen Psychiatry*. 2010;67(10):1061-1068.
9. Alonso F, Latorre MA, Göransson N, Zsigmond P, Wårdell K. Investigation into Deep Brain Stimulation Lead Designs: A Patient-Specific Simulation Study. *Brain Sci*. 2016;6(3).
10. Chaturvedi A, Foutz TJ, McIntyre CC. Current steering to activate targeted neural pathways during deep brain stimulation of the subthalamic region. *Brain Stimulat*. 2012;5(3):369-377.
11. Martens HCF, Toader E, Decré MMJ, et al. Spatial steering of deep brain stimulation volumes using a novel lead design. *Clin Neurophysiol Off J Int Fed Clin Neurophysiol*. 2011;122(3):558-566.
12. Ughratdar I, Samuel M, Ashkan K. Technological Advances in Deep Brain Stimulation. *J Park Dis*. 2015;5(3):483-496.
13. Contarino MF, Bour LJ, Verhagen R, et al. Directional steering: A novel approach to deep brain stimulation. *Neurology*. 2014;83(13):1163-1169.
14. Falconer RA, Rogers SL, Shenai M. Using Directional Deep Brain Stimulation to Co-activate the Subthalamic Nucleus and Zona Incerta for Overlapping Essential Tremor/Parkinson's Disease Symptoms. *Front Neurol*. 2018;9.
15. Reker P, Dembek TA, Becker J, Visser-Vandewalle V, Timmermann L. Directional deep brain stimulation: A case of avoiding dysarthria with bipolar directional current steering. *Parkinsonism Relat Disord*. 2016;31:156-158.
16. Steigerwald F, Müller L, Johannes S, Matthies C, Volkmann J. Directional deep brain stimulation of the subthalamic nucleus: A pilot study using a novel neurostimulation device. *Mov Disord Off J Mov Disord Soc*. 2016;31(8):1240-1243.
17. Tinkhauser G, Pogosyan A, Debove I, et al. Directional local field potentials: A tool to optimize deep brain stimulation. *Mov Disord*. 2018;33(1):159-164.
18. Zhang S, Zhou P, Jiang S, Wang W, Li P. Interleaving subthalamic nucleus deep brain stimulation to avoid side effects while achieving satisfactory motor benefits in Parkinson disease. *Medicine (Baltimore)*. 2016;95(49).
19. Buhlmann J, Hofmann L, Tass PA, Hauptmann C. Modeling of a Segmented Electrode for Desynchronizing Deep Brain Stimulation. *Front Neuroengineering*. 2011;4.
20. Matsumoto JY, Fossett T, Kim M, et al. Precise stimulation location optimizes speech outcomes in essential tremor. *Parkinsonism Relat Disord*. 2016;32:60-65.
21. Peña E, Zhang S, Deyo S, Xiao Y, Johnson MD. Particle swarm optimization for programming deep brain stimulation arrays. *J Neural Eng*. 2017;14(1):016014.
22. Ramirez-Zamora A, Kahn M, Campbell J, DeLaCruz P, Pilitsis JG. Interleaved programming of subthalamic deep brain stimulation to avoid adverse effects and preserve motor benefit in Parkinson's disease. *J Neurol*. 2015;262(3):578-584.